

# ANTHONY JAMES MANSER

Residential Sales & Lettings



## Napier Road ISLEWORTH, TW7 7HP £565,000

Freehold

Council Tax Band E

Situated in an excellent residential location and within short walking distance of the River Thames and its pathway to Richmond and St Margarets Old Isleworth with its wide selection of shops and cafes is also in close proximity. There are a number of local primary schools. This is a Victorian terraced house providing on the ground floor entrance hallway, two spacious reception rooms, kitchen and bathroom. The first floor affords two double bedrooms. There is a formal front garden and good sized rear garden. This property is vacant and chain free. View now with the owners sole agent.

### Viewing

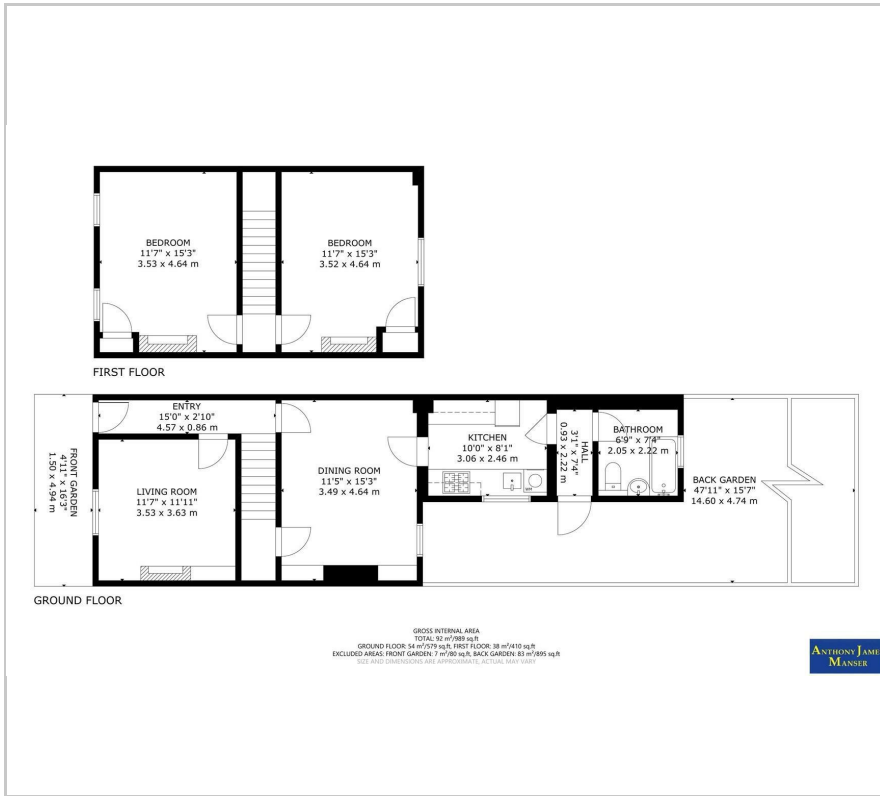
Please contact our Sales Office on 020 8847 0488 if you wish to arrange a viewing appointment for this property or require further information.



- A Victorian Terraced House
- Excellent Location Close to St Margarets
- Two Double Bedrooms
- Two Spacious Reception Rooms
- Available with Chain Free Vacant Possession
- Private Rear Garden
- Keys Available now to View
- Short Walk to Thames and River Path to Richmond
- Excellent Variety of Local Primary Schools
- Ideal First Time Purchaser



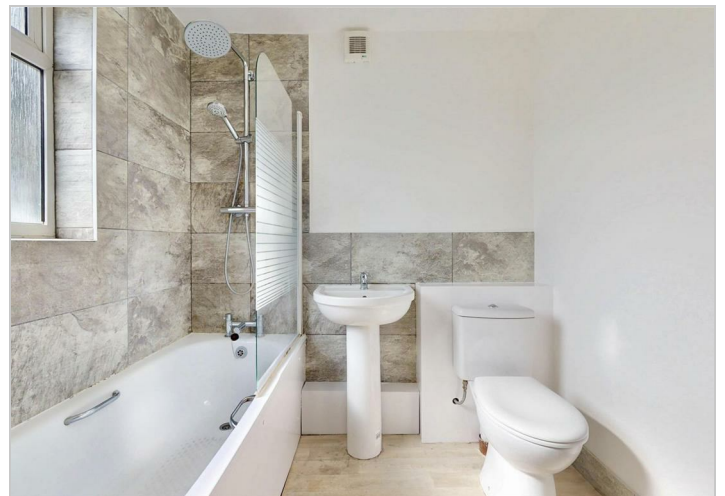
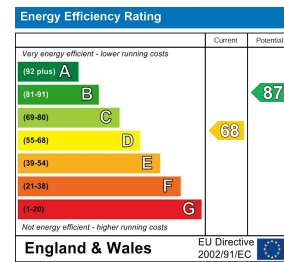
## Floor Plan



## Area Map



## Energy Efficiency Graph



These particulars, whilst believed to be accurate are set out as a general outline only for guidance and do not constitute any part of an offer or contract. Intending purchasers should not rely on them as statements of representation of fact, but must satisfy themselves by inspection or otherwise as to their accuracy. No person in this firm's employment has the authority to make or give any representation or warranty in respect of the property.